

Single Meter Sockets Without Bypass

100 Amp Self-Contained

Single Meter Sockets/
Without Bypass

1



011

Application

- Single meter position
- Designed to receive watthour meters that meet ANSI C12.10
- Surface or semi-flush mounting
- Overhead or underground feed

Construction

- Type 3R construction
- Snap type sealing ring included
- 5th jaw provision at nine o'clock – 011 series only
- Ring style

Standards

- UL 414 listed, complies with ANSI C12.7

Finish

- ANSI 61 gray acrylic electrocoat finish

Accessories

- 5th jaw kit — catalog #50365
- Screw type sealing ring — catalog #25016D (included with MS73 catalog numbers)
- Steel and clear lexan covers for socket opening
- AW hubs

Overhead-Surface Mount

CATALOG NUMBER	AIC RATING	AMPACITY		VOLTAGE	SERVICE TYPE	NUMBER OF JAWS	HUB PROV.	CONDUCTOR LUG RANGE		FIGURE NUMBER	DIMENSIONS (INCHES)		
		MAX.	CONT.					PHASE CONDUCTOR LINE/LOAD	NEUTRAL CONDUCTOR		HEIGHT (H)	WIDTH (W)	DEPTH (D)
011	†	150	125	600	1Ø 3W	4	AW	14 AWG - 2/0 AWG	14 AWG - 2/0 AWG	Fig. 1	12	8	4 5/8
011MS73	†	150	125	600	1Ø 3W	4	AW	14 AWG - 2/0 AWG	14 AWG - 2/0 AWG	Fig. 1	12	8	4 5/8
927	†	150	125	600	3Ø 4W	7	AW	14 AWG - 1/0 AWG	14 AWG - 2/0 AWG	Fig. 3	17	8	4 5/8

Overhead-Flush Mount

CATALOG NUMBER	AIC RATING	AMPACITY		VOLTAGE	SERVICE TYPE	NUMBER OF JAWS	HUB PROV.	CONDUCTOR LUG RANGE		FIGURE NUMBER	DIMENSIONS (INCHES)		
		MAX.	CONT.					PHASE CONDUCTOR LINE/LOAD	NEUTRAL CONDUCTOR		HEIGHT (H)	WIDTH (W)	DEPTH (D)
011F	†	150	125	600	1Ø 3W	4	NONE	14 AWG - 2/0 AWG	14 AWG - 2/0 AWG	Fig. 2,6	12	8	4 5/8
011SF	†	150	125	600	1Ø 3W	4	NONE	14 AWG - 2/0 AWG	14 AWG - 2/0 AWG	Fig. 2,7	12	8	4 5/8
927F	†	125	100	600	3Ø 4W	7	NONE	14 AWG - 1/0 AWG	14 AWG - 2/0 AWG	Fig. 4	17	8	4 5/8

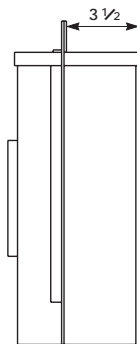
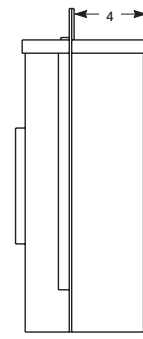
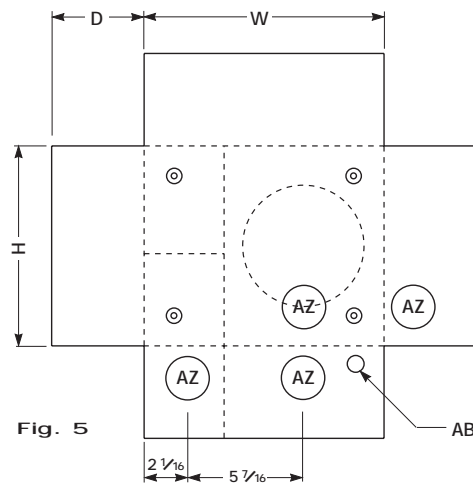
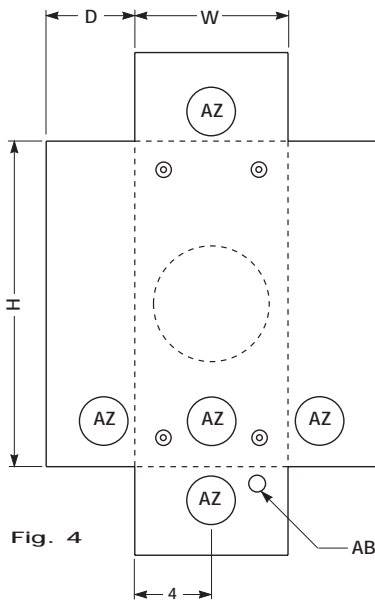
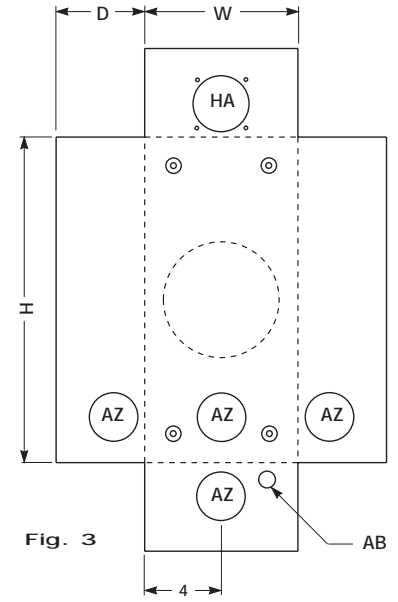
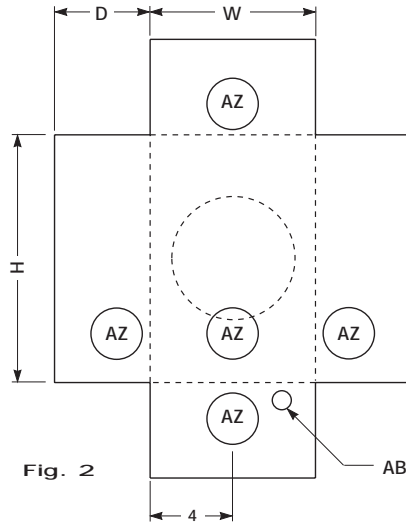
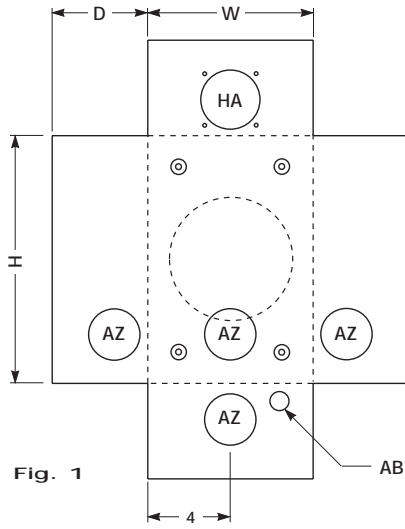
Underground-Surface Mount

CATALOG NUMBER	AIC RATING	AMPACITY		VOLTAGE	SERVICE TYPE	NUMBER OF JAWS	HUB PROV.	CONDUCTOR LUG RANGE		FIGURE NUMBER	DIMENSIONS (INCHES)		
		MAX.	CONT.					PHASE CONDUCTOR LINE/LOAD	NEUTRAL CONDUCTOR		HEIGHT (H)	WIDTH (W)	DEPTH (D)
U011	†	150	125	600	1Ø 3W	4	NONE	14 AWG - 2/0 AWG	14 AWG - 2/0 AWG	Fig. 5	12	12	4 5/8

† = Meter sockets shown on this page have certain short circuit current ratings when used in conformance with the tables on page 8.

Single Meter Sockets Without Bypass

100 Amp Self-Contained



Knockouts — Conduit Sizes	
AB	= 1/2"
AZ	= 2" - 1 1/2" - 1 1/4" - 1"
HA	= AW HUB

Single Meter Sockets/
Without Bypass
1